



**GV series is suitable to degrease and sanitize any object or surface in an easy, ecological and definitive way.**

GV range is made up of electric generators, vacuum steam generators, vacuum steam generators with foam system. Ideal for food and baking industry, for private and institutional use, for pharmaceutical and mechanical industry, for dairy factories, for building sectors and so on.

**Performances: temperature, steam production and pressure**

The same remarks about pressure and delivery rate made for high-pressure cleaners, have to be taken into consideration also for steam generators; in this case, the important difference is the physical relationship (and so not subjective or debatable) that exists between steam pressure and its temperature: to a fixed pressure values correspond right and univocal temperature. Knowing these values it is easy to identify the ones (like us) who show the right double relation between pressure and temperature.

Outlet steam temperature (not boiler temperature, that is higher)

is important because there are natural limits (about 140°C) under which it is not possible to talk about sanitification and so the purpose that led to the machine purchase (clearly wrong) could be unattended.

**Is it better a steam generator or a hot water high-pressure cleaner?**

As far as the choice is concerned, the aspects to be considered are the analysis of the task that must be done and all the elements that make up the cost of the operation, i.e. working speed (labour cost) and (more and more important) waste treatment (waste disposal cost).

As far as the working speed is considered, it is important the whole cleaning procedure and not only the effective washing time: with the high-pressure cleaner it is not possible an indoor washing, unless there is a filled in collection system, instead it is necessary to move the washing phase outside; with the steam generator it is not necessary to move outside, it is possible to wash the part exactly where it is, because the water generated can be easily dried.

Steam at 180°C allow to degrease dirt also without the use of heavy chemical products. If they are necessary to speed up the washing task, it is very important to consider the cost of draining away dirty water.

The danger of chemical products used is generally proportional to the effectiveness against increasing dirt tenacity.

If we wash with the high-pressure cleaner we produce from 10 to 21 litres of polluted water, that must be collected and drained following the current regulation: in a single wash of a couple of hours 2,5 tons of dirty water is produced!

If we wash with a steam generator, the most powerful machine produces 37 litres per hour, with the most part of the liquid that evaporates, with a two hour wash the remaining dampness and disinfecting product is very low!

Analyzing all these subjects it is clear that in particular circumstances (lack of purification plant for water treatment), the steam generator is more advantageous of a high-pressure cleaner.

On the other side, rinsing speed is the consequence to the delivery rate that hits dirt, so if only the washing phase is considered, high-pressure cleaner is faster.

Steam can be considered water with a related dampness very, very low (superheated steam is just hot air and it doesn't have a significant mechanical action...), with an outlet temperature much higher (180°C) than a high-pressure cleaner: this means that the mechanical power is lower than the one of water, but the degreasing power of steam is much higher.



#### • Multipurpose washable filter

It combines all the advantages of the cartridge filter but with the plus that it can vacuum both dry and wet at the same time.

It can be washed with tap water.



#### • Foam system:

the machine is equipped with connection for compressed air and pressure gauge for foam cleaning. Using the lance with the hose a thick foam can be produced that will stay on the dirty components, giving more effectiveness to the detergent.



#### • Discharge valve:

Allows a complete discharge of the boiler (not possible even through gun use). In this way it is possible to remove water and limestone residual inside the boiler and from the coil surface.

This valve maybe opened only when the boiler is not hot, and it is recommended to accomplish regularly.



#### • Unlimited autonomy:

The boiler is refilled by a water pump that gets water from an external water tank. This system allows an unlimited autonomy, because it is not necessary to turn off the steam generator and wait a lower temperature to refill with water.

An automatic control recharges the boiler when necessary. In some models there is an acoustic signal advising about low water level inside the water tank.



#### • Integrated vacuum:

Dirt is vacuumed inside a tank integrated in the machine



GV Kone

GV Egon VAC 4.1 Plus

GV Etma-R 5.1

GV Etma-R 5.1 FOAM

GV Katla

GV 3 M plus  
GV 3,3 M plus

Code	Model	Page	Absorbed power	Suction motor	Max pressure	Steam production	Max Temperature	Heating and activation time required	Water tank capacity	Detergent tank capacity	Packaging dimensions	Packaging weight	Packaging weight	Pieces for pallet
			W	W	bar	Kg/h	°C	min	l	l	mm L x l x h	kg	lbs	n°
8.404.0051	GV KONE	214	2300	-	4	2,6	143	10	1,6	-	470x330x350	8	17,64	25
8.406.0017	GV Egon VAC 4.1 Plus	216	1900	1200	5	2,3	152	2	1,2	-	550x400x500	14	30,86	16
8.451.1201	GV ETNA-R 5.1	218	3000	1100	7	3,25	165	4	5	5	750x600x1030	42,5	93,69	4
8.451.1210	GV ETNA-R 5.1 FR	218	3000	1100	7	3,25	165	4	5	5	750x600x1030	42,5	93,69	4
8.451.1208	GV ETNA-R 5.1 FOAM	220	3000	1100	7	3,25	165	4	5	5	750x600x1030	42,5	93,69	4
8.453.0001	GV KATLA	222	3300	-	9	4,62	175	7	5	5	750x600x700	31	91,27	10
8.450.0038	GV 3 M PLUS	224	3000	-	9	4,2	175	8	5	5	595x435x650	37	81,57	8
8.450.0010	GV 3.3 M PLUS	224	3300	-	9	4,62	175	7	5	5	595x435x650	37	81,57	8
8.458.0006	GV 5 T PLUS	226	5000	-	9	8	175	7	10	5	595x435x650	40	88,18	8
8.458.0001	GV 8 T PLUS	226	8000	-	9	13,50	175	6	10	5	595x435x650	40	88,18	8
8.452.0010	GV VESUVIO 10	228	10000	-	10	14,8	180	9	25	5	1300x780x1080	134	295,41	1




 GV 5 T plus  
GV 8 T plus


GV Vesuvio


 GV Metis  
(Diesel steam generator)

 GV Kolumbo  
(Diesel steam generator)

 Graffiti Waster  
(Diesel steam generator)

Code	Model	Page	Absorbed power	Suction motor	Max pressure	Steam production dry/wet	Max temperature	Heating and activation time required	Water tank capacity	Detergent tank capacity	Packaging L x l x H	Packaging weight	Packaging weight	Pieces for pallet
			W	W	bar	Kg/h	°C	min	l	l	mm L x l x h	kg	lbs	n°
8.452.0029	GV VESUVIO 15	228	30000	-	10	22,2	180	8	25	5	1300x780x1080	134	295,41	1
8.452.0002	GV VESUVIO 18	228	18000	-	10	26,50	180	7	25	5	1300x780x1080	134	295,41	1
8.452.0030	GV VESUVIO 21	228	21000	-	10	31	180	7	25	5	1300x780x1080	134	295,41	1
8.452.0001	GV VESUVIO 30	228	30000	-	10	44,50	180	6	25	5	1300x780x1080	134	295,41	1
8.457.0001	GV METIS	230	350	-	10	50/90	178	5	18	-	1130x710x1110	110	286,60	1
8.628.0006	GV KOLUMBO	232	350	-	10	50/90	178	5	25	2,5	1300x780x1080	140	308,64	1
8.628.0025	GV KOLUMBO cordless	232	350	-	10	50/90	178	5	25	2,5	1300x780x1080	140	308,64	1
8.628.0017	GV KOLUMBO 2 Ways	232	350	-	10	50/90	178	5	25	2,5	1300x780x1080	140	308,64	1
8.628.0027	GRAFFITI WASTER	234	350	-	10	50/90	178	5	25	2,5	1300x780x1080	166	265,97	1





## GV Kone

## STANDARD EQUIPMENT



## Equipped with:

- Saturated steam at 4 bar at a temperature of 143°C
- Boiler 2,3 kW
- Heating and activation time required: 10 min
- Pressure switch
- Double thermostat
- Cap with protection against anti-unscrewing and safety valve
- Handy accessory compartment with electric cable holder
- Control panel with lamps
- Impact resistant covers
- Steam regulation
- Thermometer
- Power cable 6 m.

- Hose 2,8 m



- 2x 6.402.0078



- 6.402.0003



- 6.402.0004



- 6.402.0006



- 6.402.0005



- 6.402.0123



- 6.402.0122



- 3.099.1053



- 3.099.1052



- 3.099.0126



- 3.099.0189



	GV Kone
code	8.404.0051
max steam pressure/temperature	4 bar/143° C
boiler absorbed power	2300 W/220-240V ~ 50Hz
steam production	2,6 kg/h max
boiler type/volume	Alluminium/2,4 l



Lavor steam cleaner GV Kone sanitizes and sterilizes every surface with steam power, without using detergents or disinfectants. GV Kone is environmental friendly.

Steam regulation allows washing adjusting considering the surface to be treated: in this way every kind of surface has the right treatment.



The machine is user friendly and has a wide range of accessories: GV Kone is a comfortable and safe daily working tool.

Steam cleaning function is perfect in shops, premises, offices as well as in household application and removes the toughest and hidden dirt while eliminating mites, germs and bacteria.



## GV Egon VAC 4.1 Plus

## STANDARD EQUIPMENT



## Equipped with:

- ABS body
- Ready steam warning lamp
- Boiler 1,9 kW S.S. AISI 304
- Low level water lamp indicator
- Boiler is refilled continuously
- Flex hose 2 m
- Wheels suitable for use in food processing area
- ON/OFF main switch with indicator lamp
- ON/OFF boiler switch with indicator lamp
- Steam regulation
- Recovery tank capacity 8 l.
- Washable filter
- HEPA filtering system H14 cod. 3.752.0321
- Pressure gauge.
- Suction speed control (4 level) on handle

• 5.211.0165



• 2 X 3.753.0127



• 3.754.0255



• 3.754.0108



• 3.754.0109



• 3.754.0110



• 6.402.0115 PEK



• 6.402.0117 Stainless steel



• 6.402.0116 Brass



• 6.402.0095



• 3.754.0271



• 3.754.0292



• 3.754.0293



• 3.754.0005



• 5.412.0002



• 3.754.0015



• 3.754.0121



• 6.402.0096



• 3.754.0296



• 3.099.1923



• 3.754.0295



• 3.754.0294



• 6.402.0132



GV Egon VAC 4.1 Plus	
code	8.406.0017
max steam pressure/temperature	5 bar/152° C
boiler absorbed power	1900 W/220/240V ~ 50Hz (Ph 1)
vacuum motor absorbed power	1200 (max 1400) W
column depression/air flow	24 kPa/220 m³/h
recovery tank capacity	8 l



GV Egon VAC 4.1 allows, simply and quickly and with the exclusive use of water, steam cleaning of all surfaces together with dust and liquid vacuuming. It is possible to clean and sanitize all surfaces (ceramic, stainless steel, glass, wood, linoleum, marble, carpet, armchairs and sofas) with high temperature steam, removing mites, germs, bacteria and prevent the onset of allergies. High pressure stainless steel boiler with unlimited autonomy, ready in a few moments and complete with a wide set of accessories. Silent operation in sensitive and crowded areas,

just setting the suction power on the gun. Egon Vac 4.1 is equipped with an HEPA H14 filter which remove the 99.995% of the air contaminants preventing the spread of bacterial and viral organism present in the air. No more waiting for the boiler to cool down, it can be safely refilled, even while you are using it. Set the boiler, choose the steam intensity. All the controls are on the handle, press the lever to steam, press the button to vacuum. Thanks to the powerful suction and the remote electronic function, it is possible to control the vacuum power and the steam plus



chemical injection directly from the gun, for an easy and professional cleaning operation.

### **Fields of applications Steam system:**

Hospitality, community & healthcare (hospitality, buildings cleaning, spa & sport, education & community, healthcare).

Food & beverage (food industry, catering, beverage, winery).

Industry (industry, transportation, car washers, car dealers).

### **Sanitizing with DOX Hygiene**

Steam itself is a powerful virus and bacteria killer. In addition, Egon Vac can be operated in conjunction with the optional sanitizing detergent DOX Hygiene which boost up the sanitizing feature of the steam. Important note: the presence of oxygen-based whiteners included in the DOX Hygiene may alter the color of the surfaces to be treated. DO NOT use the product in the water tank of the machine. Use only with steam diffuser accessory.





## GV Etna-R 5.1

## STANDARD EQUIPMENT



## Equipped with:

- Stainless steel body AISI 304
- Ready steam warning lamp
- Boiler 3 kW S.S. AISI 304 - Thickness 25/10
- Low level water lamp indicator
- Boiler is refilled continuously
- Switch for using chemicals and detergents mixed with steam
- Device for cleaning hot water mixed with steam
- Washable filter
- Flex hose 4 m
- Recovery tank capacity 64 l
- Drain hose system
- Steam regulation
- Wheels suitable for use in food processing area
- ON/OFF main switch with indicator lamp
- ON/OFF boiler switch with indicator lamp
- Boiler volume 4,3 l
- Suction control on handle (model GV etna-R 5.1)

- 5.211.0142 Hose 4 m (mod. GV Etna 5.1)
- 5.211.0124 Hose 4 m (mod. GV Etna 5.1 FR)



- 2 x 3.753.0141



- 3.754.0278



- 3.754.0005



- 3.754.0192



- 3.754.0109



- 3.754.0108



- 3.754.0110



- 6.405.0245



- 3.754.0194



- 3.754.0215



- 3.754.0196



- 3.754.0197



- 3.754.0204



- 3.754.0260



- 3.754.0271



- 5.212.0178



- 4.408.0454 - Sponge accessory

	GV Etna-R 5.1	GV Etna-R 5.1 FR
code	8.451.1201	8.451.1210
max steam pressure/temperature/ steam production	7 bar/165° C/3,25 kg/h	7 bar/165° C/3,25 kg/h
boiler absorbed power	3000 W/230V ~ 50Hz (Ph 1)	3000 W/230V ~ 50Hz (Ph 1)
vacuum motor absorbed power	1100 W	1100 W
column depression/air flow	22 kPa/220 m³/h	22 kPa/220 m³/h
water tank/detergent tank capacity	5 l/5 l	5 l/5 l



New simple and intuitive control panel, quick-coupling steam gun, main ON/OFF switch with lamp, boiler ON/OFF switch with lamp, steam/detergent regulator/selector, steam flow rate regulator, steam ready warning lamp, low level water indicator lamp with buzzer, steam pressure gauge. Gun with vacuum ON/OFF function (model GV etna-R 5.1)  
Unlimited autonomy thanks to the continuous power supply

of the boiler, which enables water top-ups in the tank without having to stop the machine or interrupt work.

Discharge pipe to quickly drain dirty water collected without removing the head. High efficiency bypass vacuum motor with cyclone effect. Discharge valve. Boiler with internal armoured resistance. Equipped with 3 pumps: boiler, detergent and water. Two electronic alarms, standby inactivity after 30 min.



Maximum safety thanks to the 2 safety thermostats, 1 pressure switch and 1 mechanical maximum pressure valve.

## Fields of applications

### Steam system:

Hospitality, community & healthcare (hospitality, buildings cleaning, spa & sport, education & community, healthcare).

Industry (industry, transportation, car washers, car dealers).



## GV Etna-R 5.1 Foam

## STANDARD EQUIPMENT



## Equipped with:

- Stainless steel body AISI 304
- Ready steam warning lamp
- Boiler 3 kW stainless steel AISI 304 - Thickness 25/10
- Low level water lamp indicator
- Boiler is refilled continuously
- Switch for using chemicals and detergents mixed with steam
- Device for cleaning hot water mixed with steam
- Washable filter
- Flex hose 4 m
- Recovery tank capacity 64 l
- Drain hose system
- Steam regulation
- Wheels suitable for use in food processing area
- ON/OFF main switch with indicator lamp
- ON/OFF boiler switch with indicator lamp
- Boiler volume 4,3 l
- Suction control on handle

- 5.211.0142 Hose 4 m



- 2 x 3.753.0141



- 3.754.0278



- 3.754.0005



- 6.402.0106



- 6.402.0113



- 6.405.0245



- 3.754.0194



- 3.754.0215



- 3.754.0196



- 3.754.0197



- 3.754.0204



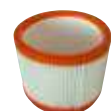
- 3.754.0260



- 3.754.0271



- 5.212.0178



- 4.408.0454 - Sponge accessory

- 3.697.0072 1l. LC prefoam

	GV Etna-R 5.1 Foam
code	8.451.1208
max steam pressure/temperature/ steam production	7 bar/165° C/3,25 kg/h
boiler absorbed power	3000 W/230V ~ 50Hz (Ph 1)
vacuum motor absorbed power	1100 W
column depression/air flow	22 kPa/220 m³/h
water tank/detergent tank capacity	5 l/5 l



New simple and intuitive control panel, quick-coupling steam gun, main ON/OFF switch with lamp, boiler ON/OFF switch with lamp, steam function/compressed air function selector, water/detergent selector, steam flow rate regulator, steam ready indicator lamp, low water level indicator lamp with buzzer, steam pressure gauge, and air pressure gauge. Gun with integrated vacuum ON/OFF function and power level display.

Multipurpose machine: cleaning with detergent, steam, steam with detergent, foam and hot water. Equipped with a compressed air connection and pressure gauges for air and steam. Unlimited autonomy of steam thanks to the electronically controlled power supply of the boiler, which enables water top-ups in the tank without having to stop the machine or interrupt work. Discharge pipe to quickly drain dirty water from the tank. Boi-



ler with internal armoured resistance. Two electronic alarms, standby inactivity after 30 min. Two-stage bypass vacuum motor. Equipped with 3 pumps: boiler, detergent and water. Maximum safety thanks to the 2 safety thermostats, 1 pressure switch and 1 mechanical maximum pressure valve + 1 LC prefoam.

## Fields of applications

### Steam system:

Hospitality, community & healthcare (hospitality, buildings cleaning, spa & sport, education & community, healthcare).

Industry (industry, transportation, car washers, car dealers).

**Foam system:** Car dealers, car washers, garages, car body shops, and every other place where a source of compressed air is already available





DRY

## GV Katla

## STANDARD EQUIPMENT



- 5.409.0256 Hose 3 m



- 2 x 3.753.0111



- 3.754.0228



- 3.754.0229



- 3.754.0235



- 3.754.0250



- 3.754.0230



- 6.405.0240



- 6.402.0096



- 3.754.0234



- 6.402.0095



- 3.099.0126



## Equipped with:

- Saturated steam at 9 bar at a temperature of 175°C
- Steam gun with low tension control
- Stainless steel body AISI 304
- Boiler 3,3 kW S. S. AISI 304. Thickness 25/10
- Low level water lamp indicator
- Device for using chemicals and detergents mixed with steam
- Heating and activation time required: 7 min.
- Steam regulation
- Discharge valve
- Pressure gauge
- The boiler can be refilled from the tank provided (continuous duty)
- Wheels suitable for food and processing areas
- Storage basket.

## Optional

- 5.409.0254 Steam gun with hose (10 m)
  - 3.754.0280 Long steam lance

	GV Katla
code	8.453.0001
max steam pressure/temperature	9 bar/175° C
boiler absorbed power	3300 W/230V ~ 50Hz (Ph 1)
steam production	4,62 kg/h
boiler type/volume	Inox AISI 304/4,6 l
water tank/detergent tank capacity	5 l/5 l



Simple and intuitive control panel, quick-coupling steam gun, main ON/OFF switch with lamp, boiler ON/OFF switch with lamp, water/detergent selector, steam flow rate regulator, steam ready indicator lamp, low water level indicator lamp with buzzer, steam pressure gauge. Steam gun with integrated steam/detergent function activation key and quick coupling of accessories.

Unlimited autonomy thanks to the continuous power supply of the boiler, which enables water top-ups in the tank without having to stop the machine or interrupt work, with major time saving in the operating phase. Boiler with saturated steam at 9 bar at a temperature of 175°C.

Equipped with 3 pumps: boiler, detergent and water. Maximum safety thanks to the 1 safety thermostat, 1 pressure switch and



1 mechanical maximum pressure valve. Discharge valve for complete discharge of the boiler; it eliminates water residues and formation of lime scale, thus lengthening the lifespan of the boiler. A 5-litre water and detergent double tank. A rich and complete range of accessories is supplied.

## Fields of applications

### Steam system:

Hospitality, community & healthcare (hospitality, buildings cleaning, spa & sport, education & community, healthcare).  
Industry (industry, transportation, car washers, car dealers).



**GV 3 M Plus/GV 3,3 M Plus****STANDARD EQUIPMENT**

- 5.409.0256 Hose 3 m



- 2 x 3.753.0111



- 3.754.0228



- 3.754.0229



- 3.754.0235



- 3.754.0250



- 3.754.0230



- 6.405.0240



- 6.402.0096



- 3.754.0234



- 6.402.0095



- 3.099.0126

**Equipped with:**

- Saturated steam at 9 bar at a temperature of 175°C
- Steam gun with low tension control
- Made of AISI 304 stainless steel
- Boiler stainless steel AISI 304. Thickness 25/10
- Heating and activation time required: 7 min. (model GV 3,3 M Plus)
- Steam regulation
- Discharge valve
- Pressure gauge
- Device for using chemicals and detergents mixed with steam
- The boiler can be refilled from the tank provided (continuous duty)
- Pivoting wheels with brakes, suitable for use in food processing areas.

**Optional:**

- 5.409.0254 Steam gun with hose (10 m)
- 3.749.0280 Long steam lance

	GV 3 M PLUS	GV 3,3 M PLUS
code	8.450.0038	8.450.0010
max steam pressure/temperature	9 bar/175° C	9 bar/175° C
boiler absorbed power	3000 W/230V ~ 50Hz (Ph 1)	3300 W/230V ~ 50Hz (Ph 1)
steam production	4.2 kg/h	4.62 kg/h
boiler type/volume	Inox AISI 304/4,6 l	Inox AISI 304/4,6 l
water tank/detergent tank capacity	5 l/5 l	5 l/5 l



Simple and intuitive control panel, quick-coupling steam gun, main ON/OFF switch with lamp, boiler resistance activation lamp, steam flow rate regulator, steam ready indicator lamp, steam pressure gauge. Steam gun with integrated steam/detergent function activation key and quick coupling of accessories. Boiler no water safety stop sensor. No water and water tank full lamp. Water pump activation lamp. Detergent pump activation lamp. Water/detergent selector key.

Boiler draining key.

Unlimited autonomy thanks to the continuous power supply of the boiler, which enables water top-ups in the tank without having to stop the machine or interrupt work, with major time saving in the operating phase. Boiler with saturated steam at 9 bar at a temperature of 175°C.

Equipped with 2 pumps: boiler and detergent. Maximum safety thanks to the 1 safety thermostat, 1 pressure switch and 1



mechanical maximum pressure valve.

Discharge valve for complete discharge of the boiler; it eliminates water residues and formation of lime scale, thus lengthening the lifespan of the boiler.

Equipped with 4 pivoting wheels suitable for food environments. A 5-litre water and detergent double tank.

A rich and complete range of accessories is supplied.

## Fields of applications

### Steam system:

Steam system: Food & beverage (food industry, catering, beverage, winery).

Hospitality, community & healthcare (hospitality, buildings cleaning, spa & sport, education & community, healthcare).

Industry (industry, transportation, car washers, car dealers).





## GV 5 T Plus/GV 8 T Plus

## STANDARD EQUIPMENT



- 6.402.0080  
Hose 3,5 m



- 6.402.0082



- 6.402.0081



- 6.402.0083



- 6.405.0207



- 6.402.0046



- 6.402.0069



- 4.407.0033 Steam nozzle

## Optional:

- 6.402.0087 Steam gun with hose (6 m)
- 6.402.0085 Steam gun with hose (10 m)
- 6.402.0092 Straight lance mm 750  
without nozzle
- 6.405.0197 Coupling for tanks Ø 40
  - 6.402.0094 Extension 650 mm
- 6.402.0097 Lance with flat nozzle
- 6.402.0098 Brass bristles brush Ø 80
  - 6.402.0112 Lance for barrel

## Equipped with:

- Built-in AISI 304 stainless steel
- Pivoting wheels with brakes, suitable for use in food processing areas
- The boiler can be refilled from the tank provided (continuous duty)
- Discharge valve
- Pressure gauge
- Device for using chemicals and detergents mixed with steam
- Heating and activation time required: 6 min.
- Control with low tension controls
- Control panel: ON-OFF main switch, indicator lamp,
- Saturated steam at 9 bar at a temperature of 175°C.

	GV 5 T PLUS	GV 8 T PLUS
code	8.458.0006	8.458.0001
max steam pressure/temperature	9 bar/175° C	9 bar/175° C
boiler absorbed power	5000 W/400V ~ 50Hz (Ph 3)	8000 W/400V ~ 50Hz (Ph 3)
steam production	8 kg/h	13,50 kg/h
boiler type/volume	Inox AISI 304/4,6 l	Inox AISI 304/4,6 l
water tank/detergent tank capacity	10 l/5 l	10 l/5 l



Simple and intuitive control panel, quick-coupling steam gun, main ON/OFF switch with lamp, boiler resistance activation lamp, steam flow rate regulator, steam ready indicator lamp, steam pressure gauge. Steam gun with integrated steam/detergent function activation key and quick coupling of accessories. Boiler no water safety stop sensor. No water and water tank full lamp. Water pump activation lamp. Detergent pump activation lamp. Water/detergent selector key.

Boiler draining key.

Unlimited autonomy thanks to the continuous power supply of the boiler, which enables water top-ups in the tank without having to stop the machine or interrupt work, with major time saving in the operating phase. Boiler with saturated steam at 9 bar at a temperature of 175°C.

Equipped with 2 pumps: boiler and detergent. Maximum safety thanks to the 1 safety thermostat, 1 pressure switch and 1



mechanical maximum pressure valve.

Discharge valve for complete discharge of the boiler; it eliminates water residues and formation of lime scale, thus lengthening the lifespan of the boiler.

Equipped with 4 pivoting wheels suitable for food environments. A 10l water and 5l detergent double tank.

A rich and complete range of accessories is supplied.

## Fields of applications

### Steam system:

Steam system: Food & beverage (food industry, catering, beverage, winery).

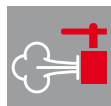
Hospitality, community & healthcare (hospitality, buildings cleaning, spa & sport, education & community, healthcare).

Industry (industry, transportation, car washers, car dealers).



## GV Vesuvio

## STANDARD EQUIPMENT



- 6.402.0080  
Hose 3,5 m



- 6.402.0082



- 6.402.0081



- 6.402.0083



- 6.405.0207



- 6.402.0046



- 6.402.0069

- 4.407.0033 Steam nozzle (GV Vesuvio 10)
- 4.407.0076 Steam nozzle (GV Vesuvio 15)
- 4.407.0077 Steam nozzle (GV Vesuvio 18/GV Vesuvio 21)
- 4.407.0079 Steam nozzle (GV Vesuvio 30)

## Optional:

- 6.402.0087 Steam gun with hose (6 m)
- 6.402.0085 Steam gun with hose (10 m)
- 6.402.0093 Steam gun with hose (15 m)
- 6.402.0090 Steam gun with hose (20 m)
- 6.402.0092 Straight lance mm 750 without nozzle
- 6.405.0197 Coupling for tanks Ø 40
  - 6.402.0094 Extension 650 mm
- 6.402.0097 Lance with flat nozzle
- 6.402.0098 Brass bristles brush Ø 80
  - 6.402.0112 Lance for barrel

## Equipped with:

- Built-in AISI 304 stainless steel
- Pivoting wheels with brakes, suitable for use in food processing areas
- The boiler can be refilled from the tank provided (continuous duty)
- Temperature regulator, discharge valve and pressure gauge
- Device for using chemicals and detergents mixed with steam
- Control with low tension controls
- Control panel: ON-OFF main switch, indicator lamp, thermoregulator, boiler activating key, gun activating key
- Timer cycle.

	GV Vesuvio 10	GV Vesuvio 15	GV Vesuvio 18	GV Vesuvio 21	GV Vesuvio 30
code	8.452.0010	8.452.0029	8.452.0002	8.452.0030	8.452.0001
max steam pressure/temperature	10 bar/180° C	10 bar/180° C	10 bar/180° C	10 bar/180° C	10 bar/180° C
boiler absorbed power	10000 W/400V~50Hz (Ph 3)	15000 W/400V~50Hz (Ph 3)	18000 W/400V~50Hz (Ph 3)	21000 W/400V~50Hz (Ph 3)	30000 W/400V~50Hz (Ph 3)
steam production	14,8 kg/h	22,2 kg/h	26,5 kg/h	31 kg/h	44,5 kg/h
boiler type/volume	Inox AISI 304/18 l	Inox AISI 304/18 l	Inox AISI 304/18 l	Inox AISI 304/18 l	Inox AISI 304/18 l
water tank/detergent tank capacity	25 l/5 l	25 l/5 l	25 l/5 l	25 l/5 l	25 l/5 l



Simple and intuitive control panel, quick-coupling steam gun, main ON/OFF switch, activation lamp, electronic regulator of the temperature with digital display, low water level display with buzzer, boiler activation key, gun activation key, steam pressure gauge, steam selector and detergent selector. Steam gun with integrated steam/detergent function activation key and quick coupling of accessories. Timer cycle. Unlimited autonomy thanks to the continuous power supply

of the boiler, which enables water top-ups in the tank without having to stop the machine or interrupt work, with major time saving in the operating phase. Boiler with saturated steam at 10 bar at a temperature of 180°C.

Equipped with 2 pumps: detergent and water. Maximum safety thanks to the 2 level controls, 1 thermostat, 1 pressure switch and 1 mechanical pressure valve. Discharge valve for complete discharge of the boiler; it eliminates water residues



and formation of lime scale, thus lengthening the lifespan of the boiler. Double tank: 25 litres for water and 5 litres for detergent. Equipped with 2 pivoting wheels and appropriate brake to use in food environments + 2 fixed wheels. A rich and complete range of accessories is supplied with practical accessory holders.

## Fields of applications

### Steam system:

Steam system: Food & beverage (food industry, catering, beverage, winery).

Hospitality, community & healthcare (hospitality, buildings cleaning, spa & sport, education & community, healthcare).

Industry (industry, transportation).





**Metis****STANDARD EQUIPMENT**

- 6.402.0102  
Hose 10 m 
- 6.402.0082 
- 6.405.0207 
- 4.407.0079 Steam nozzle 

**Optional:**

- 6.402.0103 Steam gun with hose (15 m)
- 6.402.0104 Steam gun with hose (20 m)
- 6.402.0092 Lance mm 750 without nozzle
- 6.402.0081 Lance mm 175 without nozzle
- 6.402.0083 Lance mm 425 without nozzle
- 6.402.0046 Black plastic scraper l. 50
  - 6.402.0069 Glass wiper
- 6.405.0197 Coupling for tanks Ø 40
  - 6.402.0094 Extension 650 mm
  - 6.402.0097 Lance with flat nozzle
- 6.402.0098 Brass bristles brush Ø 80
  - 6.402.0112 Lance for barrel

**Equipped with:**

- Vertical burner with high thermal efficiency steel coil
- Auxiliary motor for burner
- Discharge valve: allows a complete discharge of the boiler
- Temperature regulator: the temperature is set-up by an electronic regulator
- Steam pressure gauge
- Low fuel indicator
- Double pipe gasoil pump
- User-friendly control panel
- Unit can be continually refilled
- Provided with 2 outputs for simultaneous work of two different operators.

	Metis
code	8.457.0001
max steam pressure/temperature	10 bar / 178° C
absorbed power	350 W / 230V ~ 50Hz (Ph 1)
steam production dry/wet	50/90 kg/h
burner type/fuel consumption	Diesel / 2,83 l/h
water tank/fuel tank capacity	18 l / 18 l



Metis is a portable steam generator with a diesel fuel boiler. Unlimited autonomy thanks to no-stop water tank refilling. It does not leave any residues after cleaning. Metis water saving (over 90%) compared to normal high-pressure systems. Allows sanitisation tasks thanks to the combined use of steam and pressure. The operator does not require special protective overalls and protective masks. Provided with 2 outputs for simultaneous work of two different operators.

Portability: it does not need to be connected neither to the water supply because it is equipped with a water tank.

It is easy to move around, easy to use, and ready to use.

The advantages compared to normal high-pressure washing:

- Ecological: It consumes very little water (90% less than normal high-pressure cleaners) and does not require connection to the water supply.



- It does not require a collection tank to dispose of water reflux.
- Thanks to the high temperature that degreases and dissolves dirt, no polluting chemical products are required.
- Easy to use where required, it does not require connection to the water supply, the operator does not require special work clothing, excess water is not wasted.
- Ideal for maintenance cleaning and makes the bodywork of your car or motorbike shine without the risk of damaging it with the mechanical action of the high-pressure water.

Ideal for: Eliminating stubborn grease and dirt, leaving surfaces clean and shining. Cleaning is easy, all you need to do is use the cleaning and degreasing action of the steam at high temperature and collect residues with a microfibre cloth. Glass and delicate surfaces. Car interiors and for the most difficult parts to reach. Quick, thorough cleaning and sanitisation of mats without wetting them.



## Kolumbo

## STANDARD EQUIPMENT



**Kolumbo 2way**  
With double guns  
for two operators

## Equipped with:

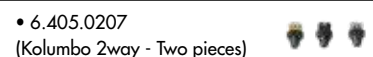
- Vertical burner with high thermal efficiency steel coil
- Auxiliary motor for burner
- Discharge valve: allows a complete discharge of the boiler
- Temperature regulator: the temperature is set-up by an electronic regulator
- Steam pressure gauge, temperature regulator and low fuel lamp
- Integrated detergent tank with detergent delivery controller by the gun
- Double pipe gasoil pump
- User-friendly control panel
- Unit can be continually refilled
- Standard with double guns for 2 operators model Kolumbo 2Way code 8.628.0017
- Battery version: Kolumbo Cordless code 8.628.0025 (Battery charger 230 V-50 Hz).



- 6.402.0085  
Hose 10 m  
(Kolumbo 2way -  
Two pieces)



- 6.402.0082  
(Kolumbo 2way -  
Two pieces)



- 6.405.0207  
(Kolumbo 2way - Two pieces)

- 4.407.0079 Steam nozzle (Kolumbo/Kolumbo cordless)
- 4.407.0077 Steam nozzle (Kolumbo 2 way)

Only Kolumbo cordless  
standard on board



**Available:** version with hose 20 m.

cod. 8.628.0039

## Optional:

- 6.402.0080 Steam gun with hose (3,5 m)
- 6.402.0087 Steam gun with hose (6 m)
- 6.402.0093 Steam gun with hose (15 m)
- 6.402.0090 Steam gun with hose (20 m)
- 6.402.0092 Lance mm 750 without nozzle
- 6.402.0081 Lance mm 175 without nozzle
- 6.402.0083 Lance mm 425 without nozzle
- 6.402.0046 Black plastic scraper l. 50
  - 6.402.0069 Glass wiper
- 6.405.0197 Coupling for tanks Ø 40
  - 6.402.0094 Extension 650 mm
  - 6.402.0097 Lance with flat nozzle
- 6.402.0098 Brass bristles brush Ø 80
  - 6.402.0112 Lance for barrel

	KOLUMBO	KOLUMBO CORDLESS	KOLUMBO 2way
code	8.628.0006	8.628.0025	8.628.0017
max steam pressure/temperature	10 bar / 178° C	10 bar / 178° C	10 bar / 178° C
absorbed power	350 W / 220/230V ~ 50/60Hz (Ph 1)	350 W / 1 x 12 DC 75 Ah C5	350 W / 220/230V ~ 50/60Hz (Ph 1)
steam production dry/wet	50/90 kg/h	50/90 kg/h	50/90 kg/h
burner type/fuel consumption	Diesel / 2,83 l/h	Diesel / 2,83 l/h	Diesel / 2,83 l/h
water tank/fuel tank capacity	25 l / 25 l	25 l / 25 l	25 l / 25 l



GV Kolumbo is a portable steam generator with a diesel fuel boiler. Unlimited autonomy thanks to no-stop water tank refilling. It does not leave any residues after cleaning. Major water saving (over 90%) compared to normal high-pressure systems. Allows sanitisation tasks thanks to the combined use of steam and detergents. The operator does not require special protective overalls and protective masks.

Portability: it does not need to be connected neither to the water

supply because it is equipped with a water tank, nor to the electrical supply (cordless model) because it has a diesel fuel boiler. It is easy to move around, easy to use, and ready to use. The advantages compared to normal high-pressure washing:

- Ecological: It consumes very little water (90% less than normal high-pressure cleaners) and does not require connection to the water supply.



- It does not require a collection tank to dispose of water reflux.
- Thanks to the high temperature that degreases and dissolves dirt, no polluting chemical products are required.
- Easy to use where required, it does not require connection to the water supply, the operator does not require special work clothing, excess water is not wasted.
- Ideal for maintenance cleaning and makes the bodywork of your car or motorbike shine without the risk of damaging it with the mechanical action of the high-pressure water.

Ideal for: Eliminating stubborn grease and dirt, leaving surfaces clean and shining. Cleaning is easy, all you need to do is use the cleaning and degreasing action of the steam at high temperature and collect residues with a microfibre cloth. Glass and delicate surfaces. Car interiors and for the most difficult parts to reach. Quick, thorough cleaning and sanitisation of mats without wetting them.



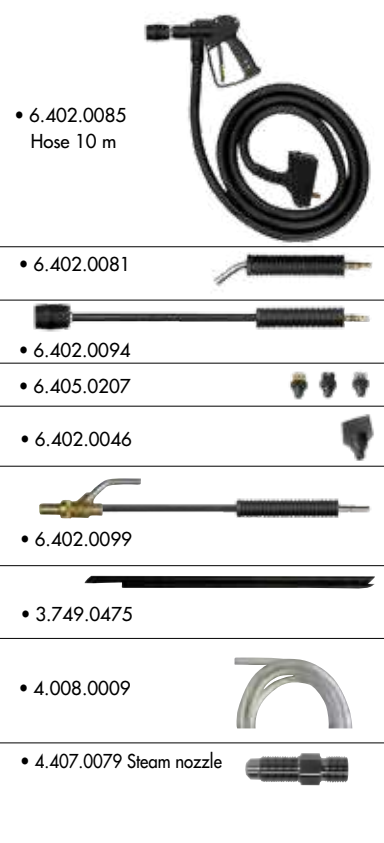


## Graffiti Waster

### STANDARD EQUIPMENT



Standard on board



### Optional:

- 6.402.0080 Steam gun with hose (3,5 m)
- 6.402.0093 Steam gun with hose (15 m)
- 6.402.0090 Steam gun with hose (20 m)
- 6.003.0100 Calibrated sand (5 kg)
- 6.402.0112 Lance for barrel

### Equipped with:

- Vertical burner with high thermal efficiency steel coil
- Auxiliary motor for burner
- Discharge valve: allows a complete discharge of the boiler
- Temperature regulator: the temperature is set-up by an electronic regulator
- Steam pressure gauge, temperature regulator and Low fuel lamp
- Integrated detergent tank with detergent delivery controller by the gun
- Double pipe gasoil pump
- User-friendly control panel
- Unit can be continually refilled
- Battery and battery charger included (Battery charger 230 V-50 Hz).

	Graffiti Waster
code	8.628.0027
max steam pressure/temperature	10 bar / 178° C
absorbed power	350 W / 1 x 12 DC 75 Ah C5
steam production wet/dry	50/90 kg/h
burner type/fuel consumption	Diesel / 2,83 l/h
water tank/fuel tank capacity	25 l / 25 l



PAT. PEND.

## What you can do with Graffiti Waster...

**Graffiti Waster** is a portable steam generator, equipped with diesel fuel boiler, allowing graffiti and dirt removal in general, thanks to the revolutionary system using steam/sand and steam/detergent mashed together. To remove all types of graffiti away from walls, buildings, floors. To restore and clean statues/monuments. Sandblasting walls and railings. Clean and sand blasting terracotta tiles, roofing tiles and wood. Pickle machineries and surfaces thanks to a combined use of detergents. Unlimited autonomy: thanks to no-stop water tank refilling.



### Main plus in comparison to traditional sand blasting systems using air or water:

- It doesn't leave residuals at the end of cleaning task.
- No water waste.
- Noiseless.
- Allows sanitization tasks thanks to the combined use of steam and detergents.
- The operator doesn't need protective overalls and protective masks with filters.
- Lack of hazardous dust that are pulled down by steam.
- With a LAVORPro vacuum cleaner it is possible to carry out a deep cleaning of the area at the end of the cleaning task
- Portability: it doesn't need to be connected nor to water supply, because it is equipped with water tank, not to the electrical supply, because it has a diesel fuel boiler.
- Easy to use and always ready to use.
- Easy to move.

